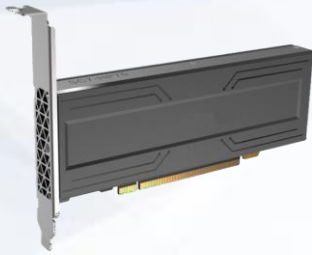


# Smart Computing Card SC7 HP75



The Smart Computing Card SC7 HP75 is equipped with the intelligent vision deep learning processor.. It efficiently adapts all AI algorithms in the market so as to realize video structuring, face recognition, behavior analysis and condition monitoring. Therefore, SC7 can enable AI in traffic, energy, finance, telecommunications, industry and other fields

## Superior data processing capability

- Supports full-process handling of 96 channels of 1080P HD video.
- Supports mixed precision inference with FP32/FP16/BF16/INT8.

## Outstanding Codec Performance

- 96 channels 25fps HD video hardware decoding
- 36 channels 25fps HD video hardware encoding
- Up to 8K resolution of video and image decoding

## Extensive Adaptation

- Adaptable to various servers
- Adaptable to different operating systems and mainstream algorithm frameworks

## Application Scenario



Smart City



Smart Transportation



Smart Grid



Smart Oil and Gas



Smart Community



Smart Service Hall



Smart Manufacturing



Smart Warehousing

## Product Specification

Specification	SC7 HP75	
Processors		24 core A53 169280 DMIPS 2.3GHz
Data processing		Support FP32/FP16/BF16/IN8 mixed precision reasoning
Video/image encoding and decoding	Video decoding capability	H.264 & H.265: 1080P @2400fps
	Video decoding resolution	8K / 4K / 1080P / 720P / D1 / CIF
	Video encoding capability	H.264 & H.265: 1080P @900fps
	Video encoding resolution	4K / 1080P / 720P / D1 / CIF
	Image decoding capability	JPEG: 1200fps @1080P (interleave off)
	Maximum resolution of image decoding	32768 * 32768
Memory	Standard configuration	48GB LPDDR4x 384bit 205GB/s
PCIe	power interface	PCIe Gen3 X16
	data link	PCIe Gen3 X8
Power consumption	Max power consumption	75W
Working environment	temperature range	0°C ~ 55°C
	Heat dissipation method	Passive
Size	length * height * width	Half height half length single slot
Deep learning framework		TensorFlow / PyTorch / PaddlePaddle / Caffe / ONNX / MXNet / DarkNet
Operating System		Ubuntu / CentOS / Debian
Master Control Processor		Compatible with Intel, AMD, etc.